

## T-Nuts

Accessory for profile systems

### SPECIFICATION

#### Types

- Type **MB**: with increased torque
- Type **OB**: without increased torque

Steel  
zinc plated, blue passivated

### INFORMATION

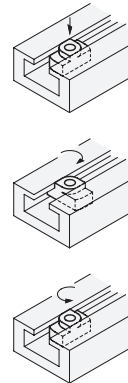
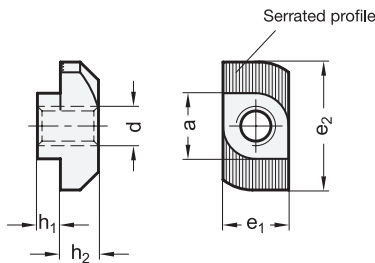
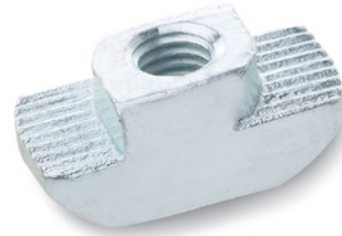
T-Slots GN 505 can be inserted vertically into a T-Slot like rhombus T-Nuts GN 508.1 (see page 985).

When tightening the clamping bolt, the nut will be forced into a crosswise position by the applied torque and firmly anchored in the T-slot.

This action is achieved by using T-nut type MB which is intentionally fitted with an overtight fit requiring a higher torque.

To remove the bolt and T-nut a 90° anticlockwise turn is sufficient to withdraw the two components with the clamped workpiece.

The clamping face of the T-nut is serrated to ensure that a possible plating coat in the T-slot is penetrated to establish a good electrical contact.



### GN 505

Description	a -0.1/-0.5	d	e1 -0.1/-0.5	e2 ±0.5	h1	h2 -0.4	⚖
GN 505-8-M4-MB	8	M 4	8	16	1.6 -0.4	5	4
GN 505-8-M5-MB	8	M 5	8	16	1.6 -0.4	5	4
GN 505-8-M6-MB	8	M 6	8	16	1.6 -0.4	5	4
GN 505-10-M4-MB	10	M 4	10	19	3.5 -1	5.8	8
GN 505-10-M5-MB	10	M 5	10	19	3.5 -1	5.8	7
GN 505-10-M6-MB	10	M 6	10	19	3.5 -1	5.8	7
GN 505-10-M8-MB	10	M 8	10	19	3.5 -1	5.8	5
GN 505-8-M4-OB	8	M 4	8	16	1.6 -0.4	5	4
GN 505-8-M5-OB	8	M 5	8	16	1.6 -0.4	5	4
GN 505-8-M6-OB	8	M 6	8	16	1.6 -0.4	5	3
GN 505-10-M4-OB	10	M 4	10	19	3.5 -1	5.8	6
GN 505-10-M5-OB	10	M 5	10	19	3.5 -1	5.8	6
GN 505-10-M6-OB	10	M 6	10	19	3.5 -1	5.8	6
GN 505-10-M8-OB	10	M 8	10	19	3.5 -1	5.8	6

